

The Diploma Programme:
 preparing students for success in higher education and to be active participants in a global society

10 REASONS WHY THE IB DIPLOMA PROGRAMME IS IDEAL PREPARATION FOR UNIVERSITY

1 IT OFFERS ACADEMIC BREADTH & DEPTH
 IB Diploma Programme students are 27% more likely to be employed, 60% more likely to be employed in high-growth occupations, and 50% more likely to be employed in high-growth industries.



6 COLLEGES VALUE STUDENTS WITH MEANINGFUL EXPERIENCES BEYOND THE CLASSROOM
 Creativity, ethics, service (EAG) encourages learning through direct experience.

3 IT'S A QUALIFICATION RECOGNIZED BY UNIVERSITIES AROUND THE WORLD

AROUND THE WORLD

5 IT CREATES INDEPENDENT LEARNERS & STRONG WRITERS
 IB students are more likely to be employed in high-growth occupations and 50% more likely to be employed in high-growth industries.



4 IT ASSESSES MORE THAN EXAMINATION TECHNIQUES
 IB students are more likely to be employed in high-growth occupations and 50% more likely to be employed in high-growth industries.

2 IB STUDENTS HAVE PROVEN TIME MANAGEMENT SKILLS
 Research has found that IB students develop strong study habits and critical time management skills, key indicators of college readiness.



7 THE IB ENCOURAGES CRITICAL THINKING
 IB students are more likely to be employed in high-growth occupations and 50% more likely to be employed in high-growth industries.



8 SUBJECTS AREN'T TAUGHT IN ISOLATION
 IB students are more likely to be employed in high-growth occupations and 50% more likely to be employed in high-growth industries.

AND HERE ARE 10 MORE REASONS...

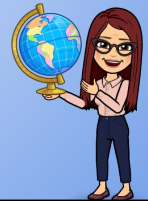


www.ibo.org



International Baccalaureate Diploma Program

North Shore High School
 Sophomore Information Session
 January 11, 2022



IB Classes are only for the “smart” students that have high GPAs.



Students, drag the icon!

Pear Deck Interactive Slide
Do not remove this bar

Students must apply to be in AP & IB classes.



Students, drag the icon!

Pear Deck Interactive Slide
Do not remove this bar

IB Courses prepare students to be college & career ready.



Students, drag the icon!



Pear Deck Interactive Slide
Do not remove this bar

Students in IB classes can't play a sport or be in an ensemble.



Students, drag the icon!



Pear Deck Interactive Slide
Do not remove this bar

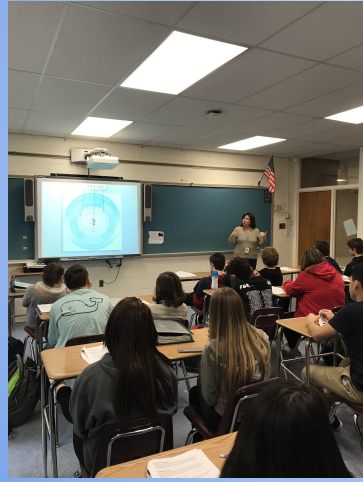
Our family has personal previous experiences with the IB.



Students, drag the icon!

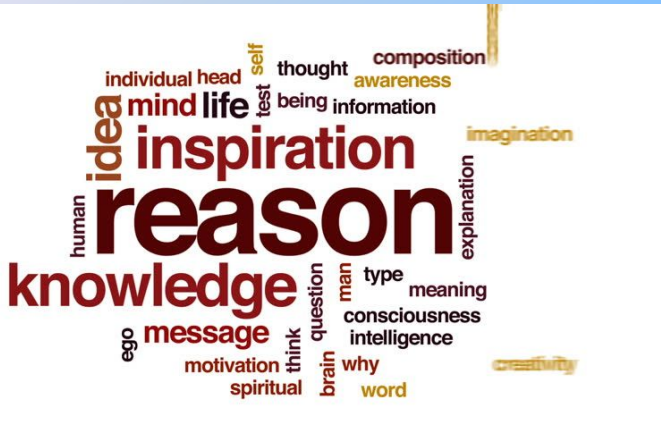
Pear Deck Interactive Slide
Do not remove this bar

What is IB?



- Thinking critically & independently
- Inquiry based
- Student-centered





3

- English HL
- History HL
- Physics HL

HL

3

- Language SL
- Math SL
- Visual Arts SL

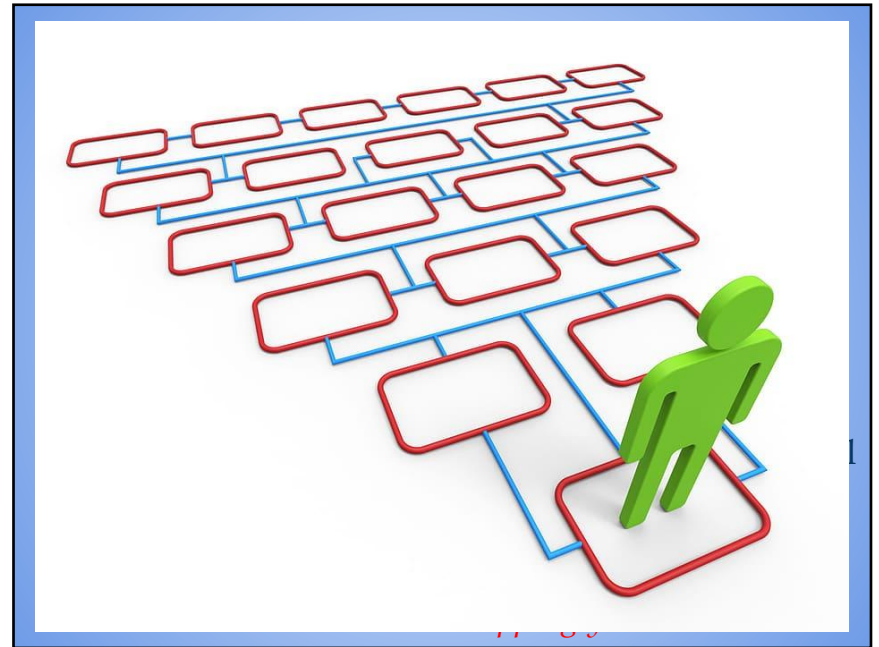
SL

3

- Theory of Knowledge
- Extended Essay
- CAS

What does this really mean for me?

1. English
2. World Language
3. History
4. Science
5. Math
6. Arts







North Shore Schools

- Nurture and enrich our students' natural delight in learning and in the powers of mind and body. Each child's awakening into confident young adulthood requires guided engagement with vital ideas and events of the past to realize fresh possibilities and discoveries for the future.
- We aspire to foster in our students those qualities of character consonant with the ideals of a democratic society. We are committed to reaching beyond routine expectations in a learning environment that encourages inquiry and builds its daily practice upon respect for oneself and others.



International Baccalaureate

- Develop inquiring, knowledgeable and caring young people who help to create a better and more peaceful world through intercultural understanding and respect.
- To this end the organization works with schools, governments and international organizations to develop challenging programmes of international education and rigorous assessment.
- These programmes encourage students across the world to become active, compassionate and lifelong learners who understand that other people, with their differences, can also be right.



What is IB?



- Last two years of schooling
- Global network
- Six Subject Groups
- Three-part core





Why be a Diploma Candidate?

- Comprehensive & interdisciplinary
- Community service including physical activity & creativity
- Independent Research
- You don't see IB, you think IB.**



Why IB? Explaining IB Assessment to students

- The IB integrates a range of assessment strategies that align with the project-centred nature of real-world inquiry and problem-solving with traditional methods, expected in high-education settings.
- DP Assessment is interest centred, choice driven, and flexible.
- Internal Assessment and the 10 to 15-hours of teaching time

Purpose of internal assessment

Internal assessment is an integral part of the course and is compulsory for both SL and HL students. It enables students to demonstrate the application of their skills and knowledge and to pursue their personal interests without the time limitations and other constraints that are associated with written examinations. The internal assessment should, as far as possible, be woven into normal classroom teaching and not be a separate activity conducted after a course has been taught.

ATL skills development: Learning transfer

Transfer

How do students transfer skills and knowledge across disciplines and subject groups?

Using skills and knowledge in multiple contexts

- Use effective learning strategies in subject groups and disciplines
- Apply skills and knowledge in unfamiliar situations
- Inquire in different contexts and gain a different perspective
- Compare contextual understanding across multiple subject groups and disciplines
- Combine knowledge, understanding, and skills to create products and solutions
- Transfer current knowledge to learning of new technologies
- Change the context of an inquiry to gain different perspectives

Benefits for students

As a result of their time in the IB, students develop:

- **time management skills** and a strong sense of self-motivation
- a keen interest in **civic engagement**
- notable **academic ability**
- strong research and writing **skills**
- **critical thinking** abilities
- an **international outlook**



Approaches to Teaching & Learning

- Based on **inquiry**
- Focused on **conceptual understanding**
- Developed in local and global **contexts**
- Focused on effective teamwork and **collaboration**
- **Differentiated** to meet the needs of all learners
- Informed by **assessments**
- Development of **skills** in a school setting such as:
 - thinking skills, communication skills, social skills, self-management skills, and research skills
- Research & reports- continuous improvement



More than the knowledge

- Ask challenging questions.
- Learn how to learn.
- Take opportunities to engage.
- Develop a strong sense of their own identity and culture.
- Develop the ability to communicate with and understand people from other countries and cultures.



Group 2:

- French SL/HL
- Italian SL/HL
- Latin SL/HL
- Mandarin SL
- Spanish SL/HL
- Ab Initio French
- Ab Initio Mandarin

Group 1:
Language & Literature HL

Group 3:

- History HL
- Business Management SL (1 Year)
- Social & Cultural Anthropology SL (1 year)

Group 4:

- Biology HL
- Physics HL
- Chemistry SL (1 year)
- Computer Sci SL
- Environmental Systems & Societies SL (1 year)
- Sports Physiology (1 year)

Group 5:

- Mathematics: Applications SL (1 year)
- Mathematics: Analysis SL (1 year)

Group 6:

- Music SL
- Theatre SL
- Visual Arts SL/HL

Diploma Candidates need 1 Course from each group*
3 HL, 3 SL
(May take 4 HL, 2 SL)

The diagram is a circular wheel representing the IB Diploma Programme. At the center is the IB Learning Paradigm logo. Surrounding it are six segments representing the groups of subjects: Group 1 (Language & Literature), Group 2 (Languages), Group 3 (History, Business, Social & Cultural), Group 4 (Sciences), Group 5 (Mathematics), and Group 6 (The Arts). The wheel is divided into six quadrants by two intersecting lines. The quadrants are labeled: 'THEORY OF KNOWLEDGE', 'APPROACHES TO TEACHING', 'APPROACHES TO LEARNING', 'CREATIVITY, ACTION, SERVICE', 'THE ARTS', and 'INTERNATIONAL-MINDEDNESS'. Arrows point from the group descriptions to their respective segments on the wheel.

Course Offerings Guide

Successful students

Course Selection Guide 2022-2023

Course name	Things to know about the course	Successful student profile
TOK	<ol style="list-style-type: none"> 1. This is a course that requires time for thinking and discussion. 2. We do deep dives into material to understand the core of a topic. 3. We cover a WIDE range of topics, everything relates. 	<ol style="list-style-type: none"> 1. Willing to participate in discussion 2. Able to present ideas clearly 3. Strong writers and deep thinkers needed
Visual Arts	COMPREHENSIVE approach to art! <ol style="list-style-type: none"> 1. MAKE it! 2. LOOK AT it! 3. DISCUSS/ANALYZE it! 	<ol style="list-style-type: none"> 1. Wants to MAKE, LOOK AT, DISCUSS art 2. Willing to work outside class time 3. Curious! Creative thinker/problem solver

A Venn diagram consisting of two overlapping circles. The left circle is labeled 'SL' and the right circle is labeled 'HL'. The overlapping area in the center represents courses that are available in both Standard Level (SL) and Higher Level (HL) formats.

Interdisciplinary Learning

KNOWLEDGE



ENVIRONMENTAL
SYSTEMS



ANTHROPOLOGY



Theory of Knowledge

KNOWLEDGE



ToK across the content areas



Literature: What is *lost in translation* from one language to another? Is it really *lost*?

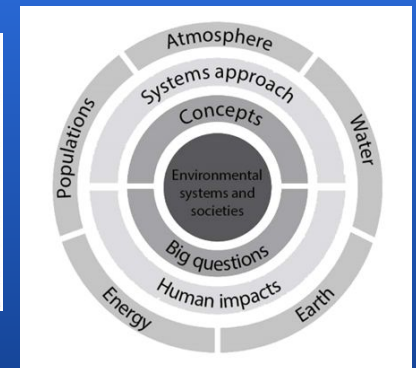
Psychology: To what extent can empathy, intuition and feeling be legitimate ways of knowing in the human sciences?

Chemistry: When performing experiments, what is the relationship between a scientist's expectation and their perception?

History: What is the difference between bias and selection?



Environmental Systems



Interdisciplinary Learning



ANTHROPOLOGY



- English HL
- History HL
- Physics HL

HL

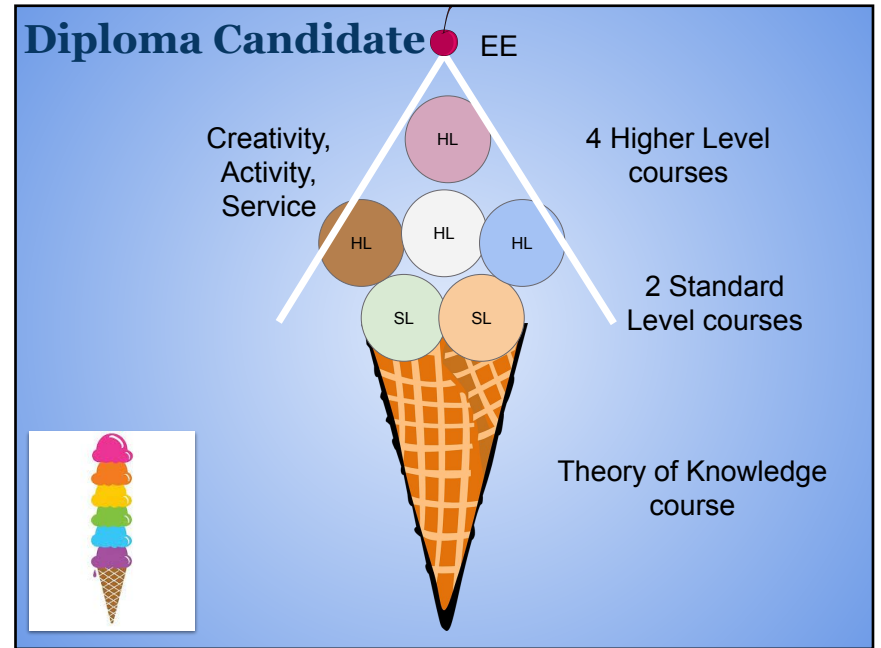
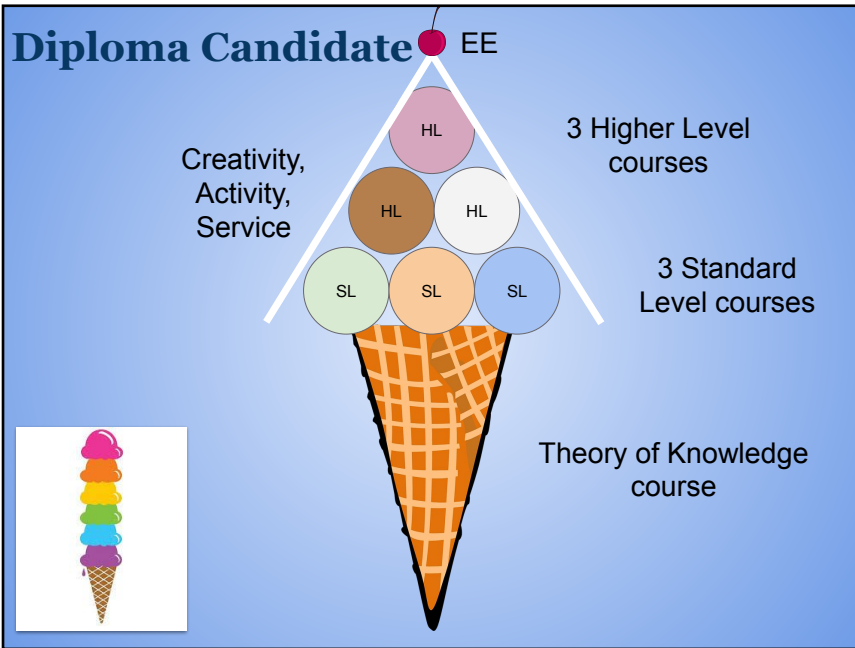


- Language SL
- Math SL
- Visual Arts SL

SL



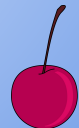
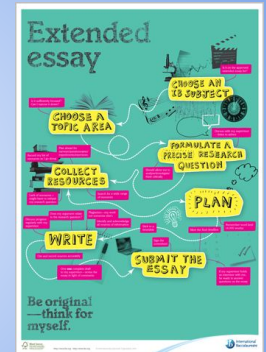
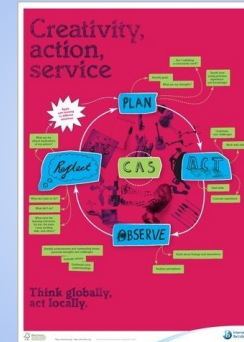
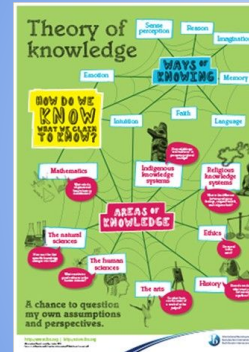
- Theory of Knowledge
- Extended Essay
- CAS

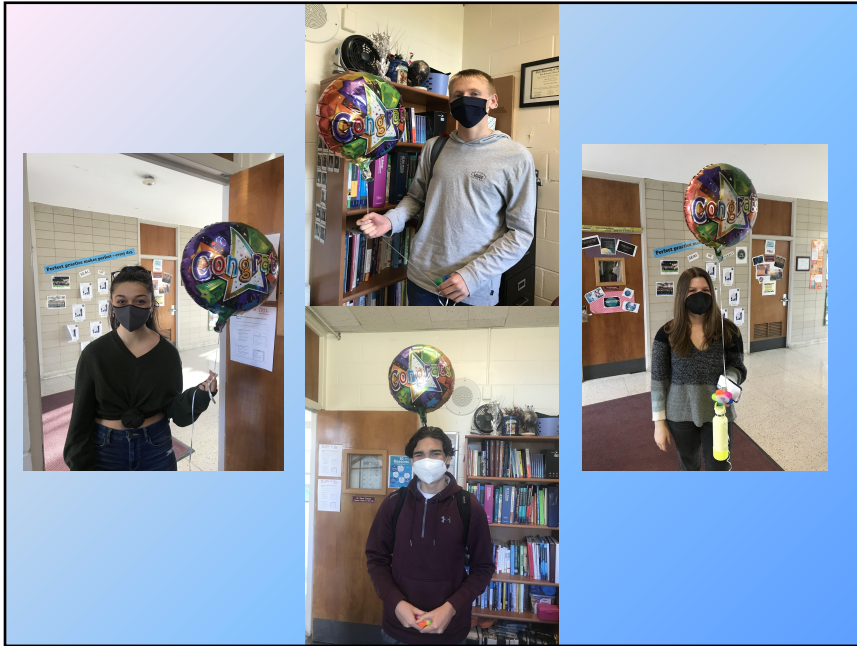


FAQ

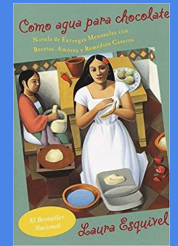
- Standard Level v. Higher Level
- Advanced Placement v. International Baccalaureate

The CORE





Claudia Scala



Las Protagonistas de Como Agua Para Chocolate y La Revolución Mexicana



Nicoletta DellaRatta



To what extent do advertisements in *Cosmopolitan* and *Sports Illustrated* mirror cultural values between men and women in 2018 and 2019?



Dylan Hoell



How has the United States healthcare system exacerbated the impact of the global insulin crisis on American diabetics?



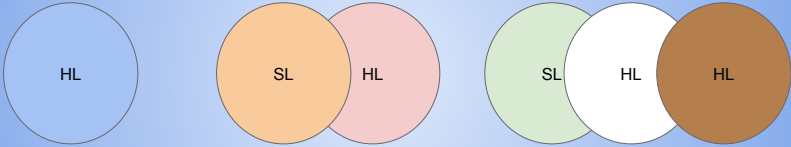
Happy T**ib**K**ib**ber!



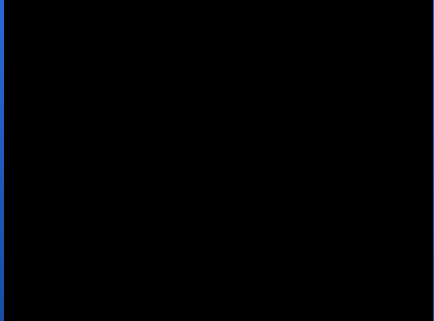
- Alana Golden
- Katie Ditrano
- Allie Eder
- IB Class of 2022

Course candidate

1-3 Standard or Higher Level courses



Brooke Demetri, Class of 2017









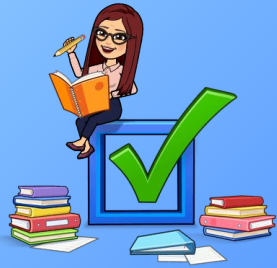
Earning the IB Diploma

- One course from each group:
 - English
 - Language Acquisition
 - Individuals and Societies
 - Science
 - Math
- One course from the Arts or a second course from one of the other subject groups
- Core: EE, TOK, CAS
- Diplomas are awarded to successful candidates that achieve **24 points or more** (max. 45)



Student Support

- Dr. Titone as the Coordinator
 - In addition to guidance counselors
 - Individual meetings upon need and request
- Ms. Halloran as the CAS Coordinator
- Ms. Rice as the extended Essay Supervisor
 - Extended Essay Mentors
- Cohort meetings & events
 - Building collegiality
- Senior Buddy



What does an IB student look like to universities?

- Problem solver
- Well-rounded
- Balanced
- Reflective
- Open-minded
- University-bound
- Highly motivated
- Committed
- Seeks educational challenges
- Someone who is prepared & ready



Admissions & Credits...

Nassau Community College, \$242 per credit


Subject	Exam	Score	Credits Awarded	Savings
Biology	Biology HL	4-5	8	\$968
Biology	Biology HL	4-5	8	\$1,936
Business Management	Business/Management SL	4-5	3	\$726
Chemistry	Chemistry SL	4-5	3	\$968
Spanish	Spanish HL	4-5	6	\$1,452
Spanish	Spanish HL	4-5	6	\$1,452



Admissions & Credits...

Hofstra University, \$1,622 per credit

Subject	Exam	Score	Course Equivalent	Credits Awarded	Savings
English	English Language and Literature HL	6-7	ENGL 1002, ENGL 1003	9	\$14,598
Biology	Biology HL	6-7	BIO 101	8	\$12,976
Social Studies	Social Cultural Anthropology HL	6-7	SOC 101	3	\$4,866
Social Studies	History of the Americas (CH) HL	6-7	SOC 101	3	\$4,866
Social Studies	History of the Americas HL	6-7	SOC 101	3	\$9,732
Spanish	Spanish HL	6-7	SPAN 602 to SPAN 999	6	\$9,732



IB = Admissions Success

Institution	# of students applied	# of students accepted	IB Student Acceptance Rate	General Acceptance Rate
Brown	218	38	17.4%	8.7%
Cornell	190	60	31.6%	18.0%
Duke	187	53	28.3%	12.6%
Princeton	168	29	17.3%	8.4%
Stanford	229	35	15.3%	7.1%
U of Penn	190	47	24.7%	12.3%
Columbia	221	30	13.6%	6.9%



© International Baccalaureate Organization 2020

Students with testing accommodations

- Subject to approval by IB
 - Consent, notification
 - Re-evaluation
- Candidates with Assessment Access Requirements
 - The IB believes that all candidates must be allowed to take their examinations under conditions that are as fair as possible. Where standard examination conditions and assessment procedures would put candidates at a disadvantage, and would prevent them from being able to demonstrate their skills and knowledge adequately, reasonable forms of access arrangements may be authorized.



Parent, Class of 2017

“The rigor of the IB Diploma Program at North Shore High School helped prepare my son for a successful freshman year in college. It is not easy to balance college level academics and the social aspects of a first year college experience. By submerging himself in an advanced level of learning and the expectations that come with it during high school, he was able to maneuver through the heavy workload, manage study habits and time management skills while allowing himself a happy social life and philanthropic causes in college.”

“I really appreciate having been able to work on long term, extended papers and projects. In college now, I have classes whose grades are a combination of only a few assessments, sometimes papers. Having experience with sophisticated extended writing has proven to be beneficial. **Also, stick with it.** Staying committed to a long-term program like this shows both admissions and advisors at schools that you have the dedication it takes to get stuff done. If they can count on that, they can usually count on you to keep your word if you have unusual or ambitious things you want to do at college.” -**Ethan Baron, Class of 2018**

“Honestly, the work transition was not bad. I have to write a ton of papers and doing that with the IB program helped transition a lot. Also, keeping all my essays was crucial- I have written three essays here already that I have been able to use information from essays written in high school.” -**Olivia Schatz, Class of 2019**

What is an IB education?



<http://www.northshoreschools.org/highschool/ib.html>

What's next?

Schedule a meeting with
Dr. Titone & your Guidance Counselor



Dr. Kerri Titone

- 277-7079, titonek@northshoreschools.org
 - @drtitone
- northshoreschools.org/highschool/ib.html
 - ibo.org



SCAN ME

